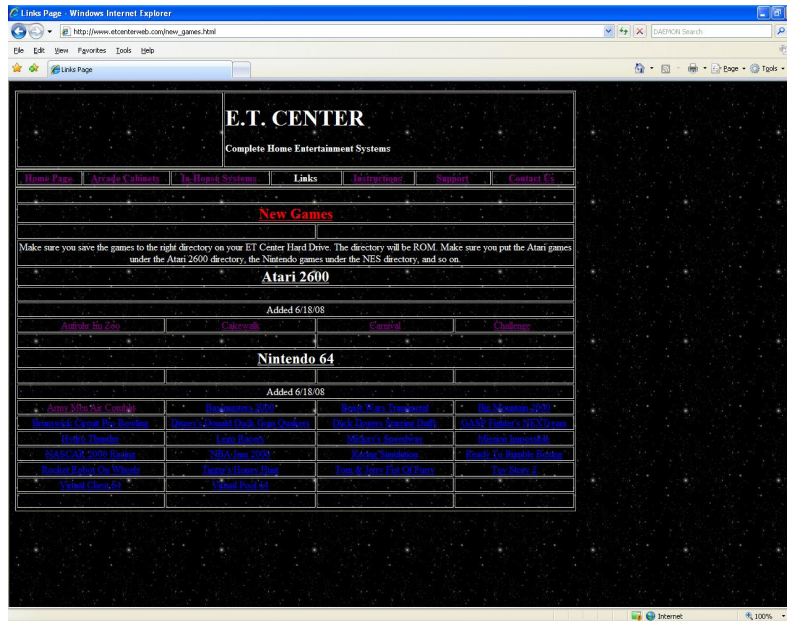


# How To Add Games To Your System

Go to [www.etcenterweb.com](http://www.etcenterweb.com) and go to the links page. On the links page go to New Games. Here you will see the games that have been listed. The type of system is in Bold White Letters. The games will be in blue letters. When you find a game that you want to add just click on the game.

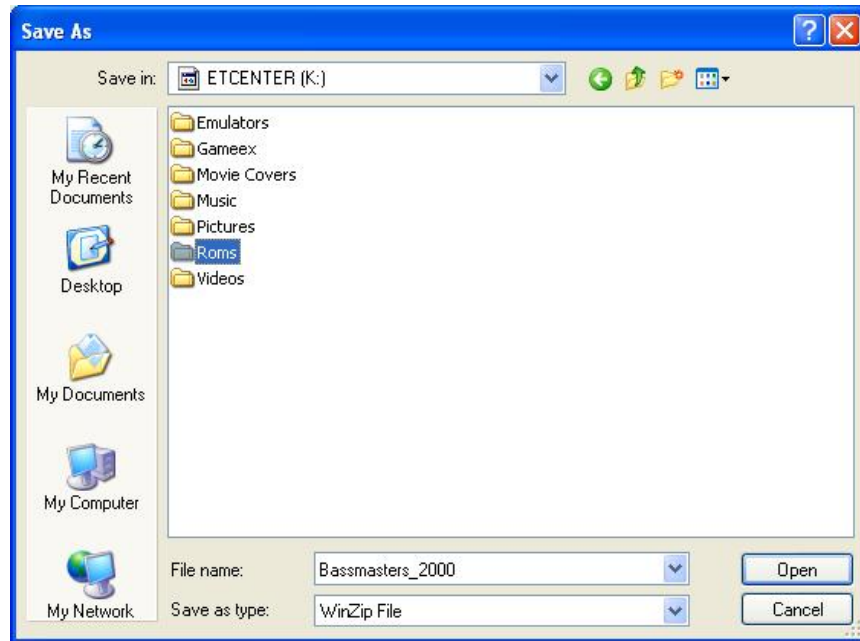


Below is what window will open after you select a game. You will need to click the button named SAVE. In this example I'm using BASSMASTER\_2000 as the example.

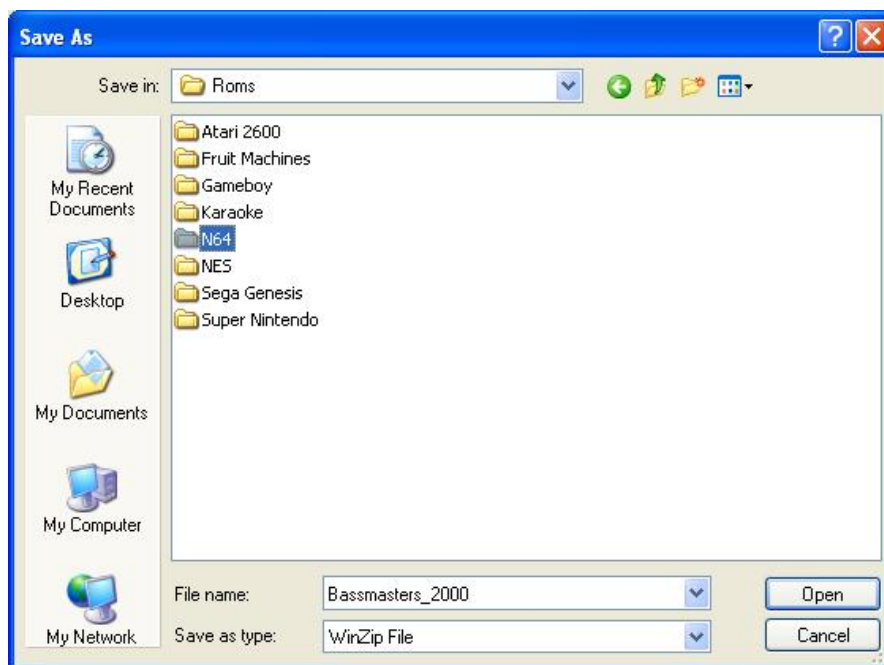


# How To Add Games To Your System

You will now need to find your ET Center main directory where everything is saved. Under this directory you will find the directory ROMS. Click twice on this to open.



You need to make sure that you save your game under the appropriate system. In this example, I'm downloading a Nintendo 64 game. So I need to click twice on N64 directory. The directories are self explanatory except for NES. That stands for Nintendo.



If you have further questions please don't hesitate to email me at [chammitt@etcenterweb.com](mailto:chammitt@etcenterweb.com).

# **How To Add Games To Your System**